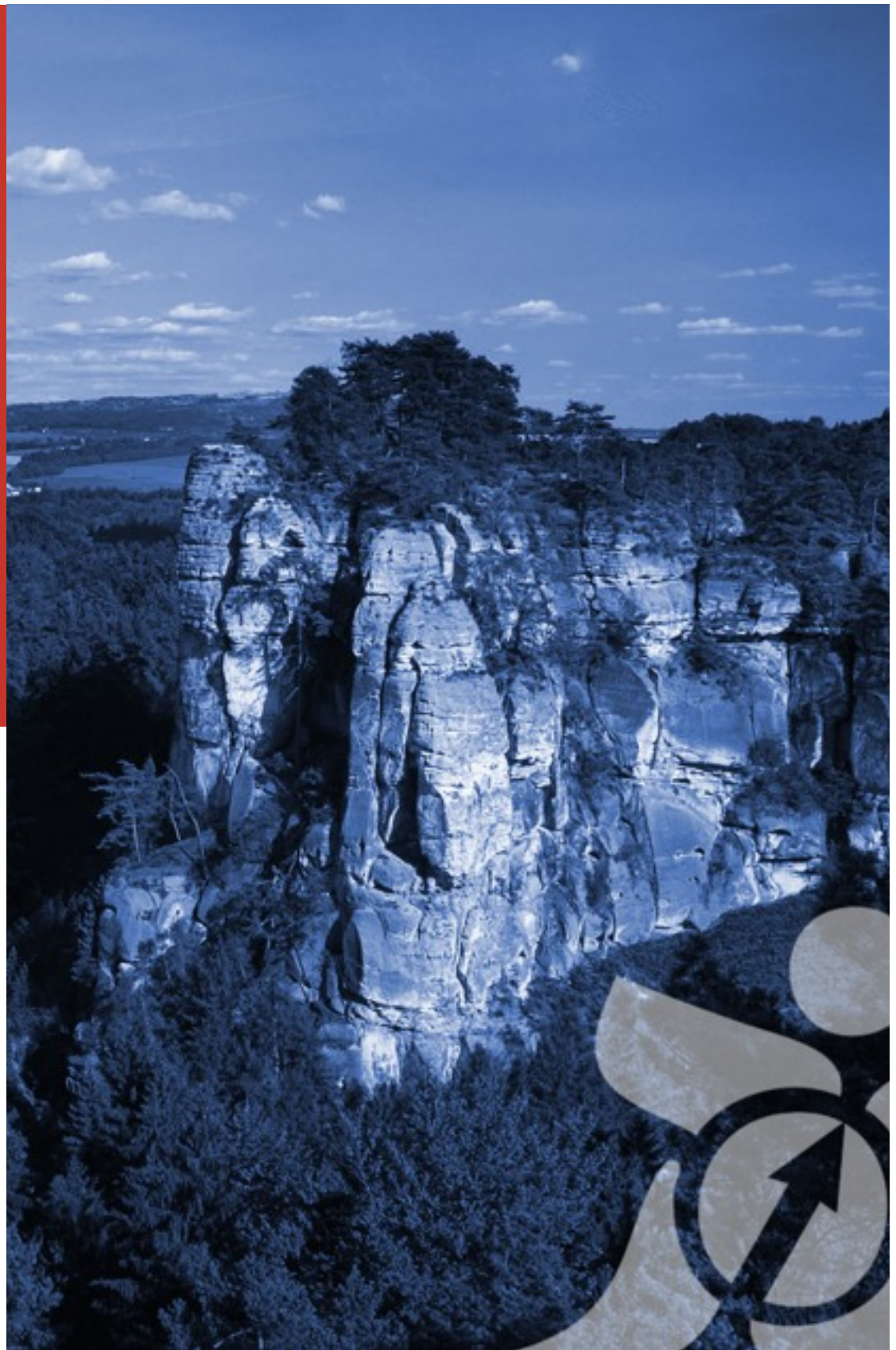


Bulletin 1



August 20th to 22nd, 2010

Turnov/Branžež, Bohemian Paradise, Czech Republic



“Dear athletes, while preparations are focusing on courses finetuning and overall event production you can get through information of the second Euromeeting bulletin. In case of any questions feel free to contact us on emails bellow.”

Martin Vana, event director

Program

Friday, August 20th, 2010

Middle distance

start 00 = 15:00

map scale 1:10 000, 5m contour interval

Saturday, August 21st, 2010

Relay

start 00 = 10:00

map scale 1:10 000, 5m contour interval

Sunday, August 22nd, 2010

Long distance

start 00 = 9:30

map scale 1:10 000 5m contour interval

Course planners

Middle - Jindřich Kořínek

Relay - Michal Jedlička

Long - Jakub Oma

Entries and classes

Classes are Women W and Men M

The deadline for entries is August 1st, 2010

The following information is obligatory:

Category, First name, Surname, SportIdent number, Country.

We kindly ask for a list of relay runners lists. Changes will be possible until 20th August.

Send the information to email address euromeeting2010@gmail.com.

Entry fee

39 Euro per person (all 3 races)

Event transportation

Transport from accommodations to arena is not provided by organizer. The route will be marked on the map and on important crossroads.

Parking cards will be provided after arrival.

Payments

All payments must be received by August 3rd, 2010 to:

IBAN: CZ1601000100060025835581

SWIFT = BIC = KOMBCZPPXXX

Note: Euromeeting - Country

Please note that the payer is responsible for all bank fees and charges.

New photos from the terrain

While finishing map revision and setting courses we have made couple of new pictures from forrests around event center at Branžež.

Check it on www.tur.cz/pekneprazdniny/2010/



Trainings

Will be provided in three different areas.
Plastic stripes will be at controls.
2 euros will be charged for each training map.



Punching system

Sport Ident system will be used.

Public race

Nice holidays in Bohemian Paradise 2010

A tour consisting of 3 stages will be organized. Courses in the same terrain as Euromeeeting competitions will be offered. More information on the website www.tur.cz/pekneprazdniny/2010

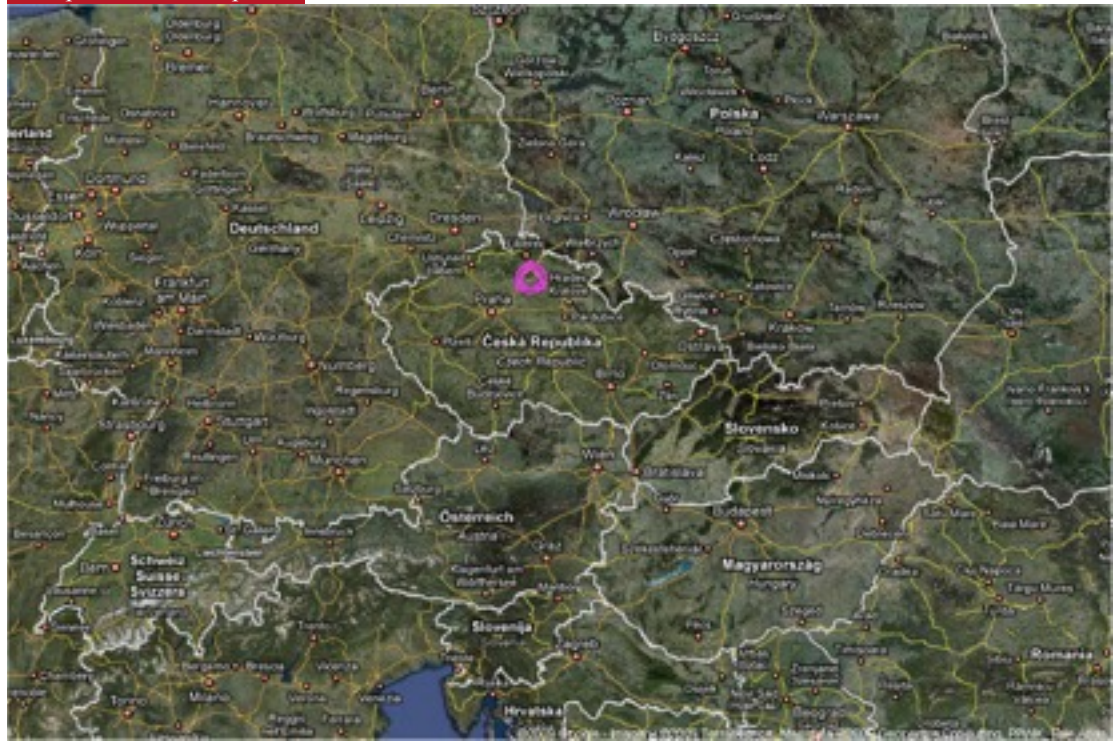
Restriction

It is strictly forbidden to use shoes with any kind of metal spikes or dibs. See examples bellow. There will be no exceptions!

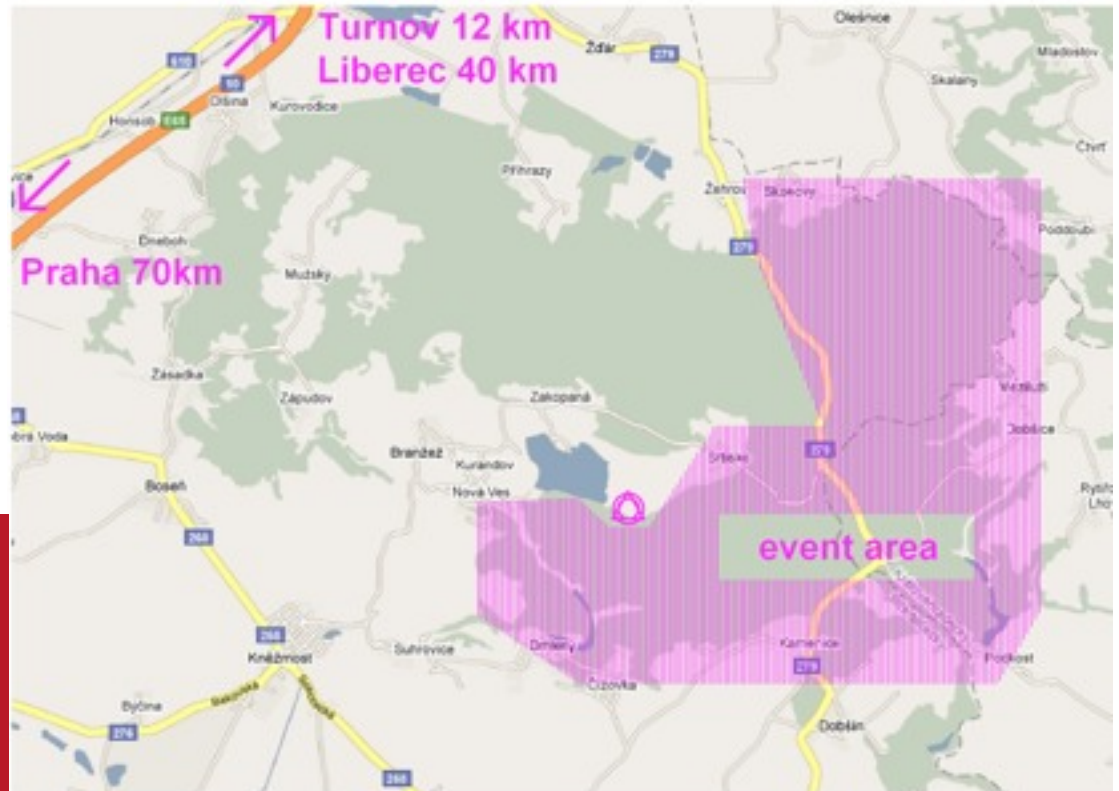


Location maps of Euromeeting 2010 - I.

Europe - Czech Republic



Event center in village Srbsko



Check Google Earth
Set GPS coordinates on 50°30'22.074"N,
15°6'0.65"E to see
the event center.

Accommodation possibilities in Turnov

A - Hotel Divizna

20 Euro per person and night (incl. breakfast). Capacity: 40 people. Additional board as negotiated.



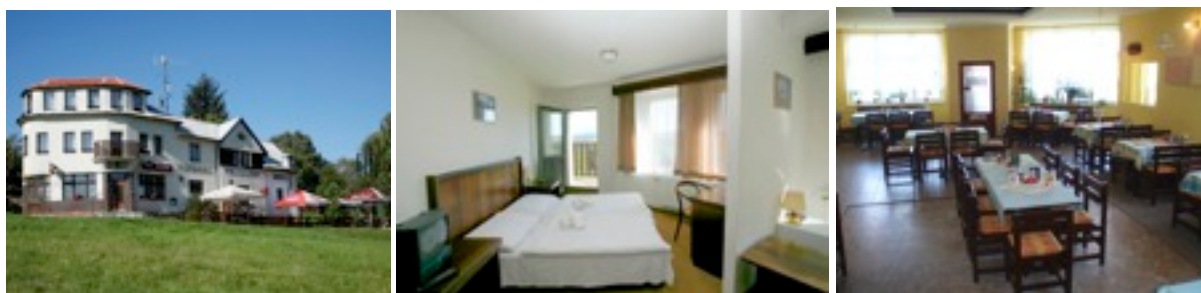
B - Hotel Karel IV.

22 Euro per person and night (incl. breakfast). Capacity: 30 people. It is possible to arrange 2 more studios for 3 people and 3 studios for 4 people (price 330 CZK excl. breakfast per person and night) or 2 apartments for 4 people (price if full capacity 370 CZK excl. breakfast per person and night). Parking place, swimming-pool etc. are at disposal for all. Additional board as negotiated.



C - Pension Hlavatice

20 Euro per person and night (incl. breakfast). Capacity: 27 people. Parking place free next to the pension.



Accommodation possibilities in Turnov

D - U Sv. Jána

20 Euro per person and night (incl. breakfast). Capacity: 24 people. Fenced parking place next to the hotel free. Additional board as negotiated.



Overview map



We are, of course, prepared to help you to find an accommodation which better complies with your vision. Please, contact us as soon as possible!

We are looking forward to seeing you in the Bohemian Paradise!

Organisers site

<http://www.tur.cz>

<http://www.orientacnibeh.cz>

Organisers email

euromeeing2010@gmail.com

Event site

<http://www.tur.cz/pekneprazdniny/2010/index.php?lang=en>



Cool rock formations

Partners of Euromeeting 2010

